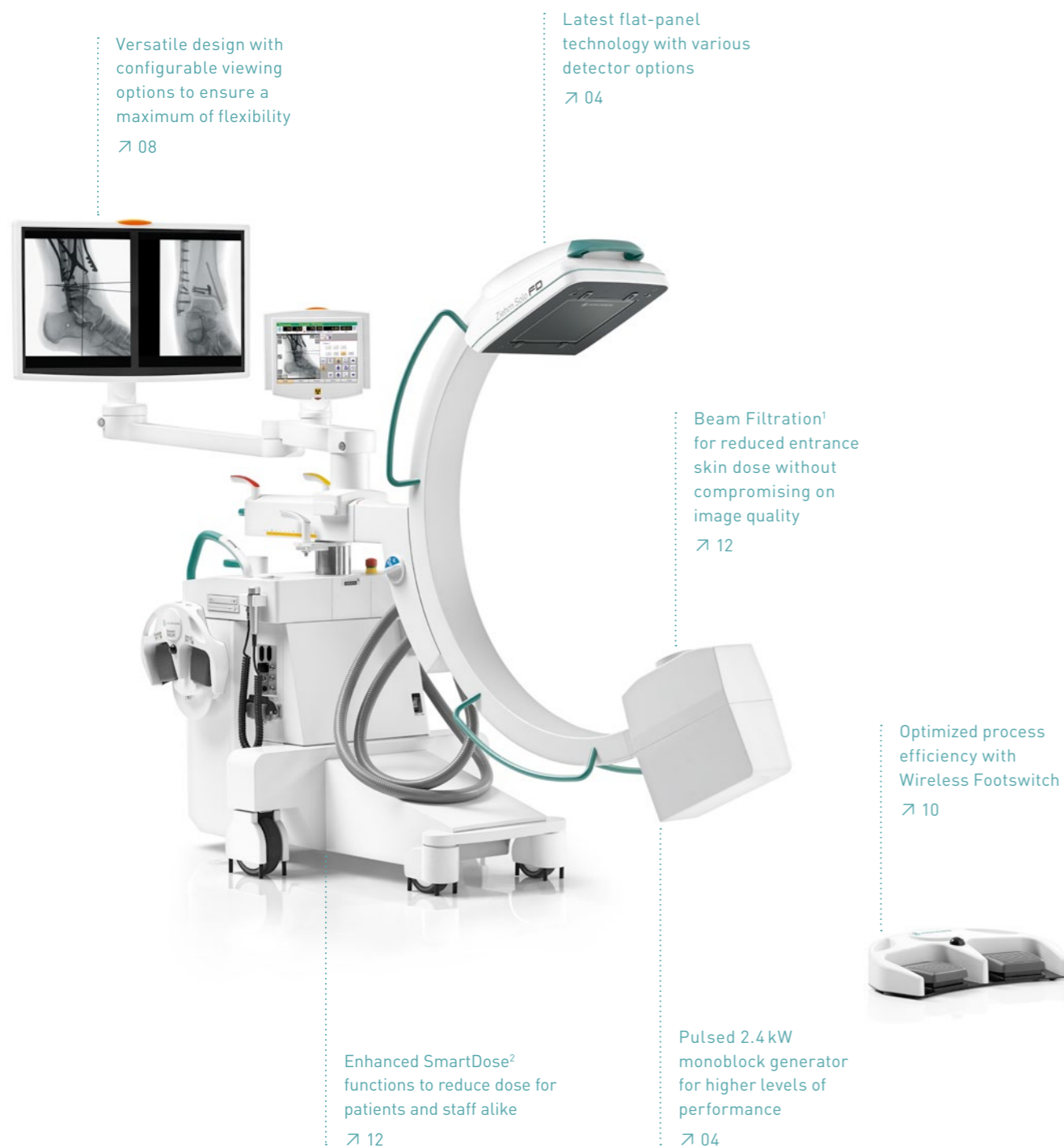




Ziehm Solo FD

Versatile design meets
latest flat-panel technology



Ziehm Solo FD. As the size of hospital and surgery center ORs is limited and equipment quantity rises, the demand for imaging systems with smaller footprints is growing. With its all-in-one design, the Ziehm Solo FD is one of the most compact C-arms on the market. It is easy to handle with high maneuverability for even the smallest treatment scenarios. Equipped with 21 cm x 21 cm or 31 cm x 31 cm IGZO flat-panel technology, a wide range of applications can be performed. Versatile viewing options and new dimensions in user friendliness offer maximum flexibility in the OR to support your clinical workflow. With the enhanced SmartDose Concept, the Ziehm Solo FD ensures best image quality at a minimized dose.

01 / Balancing image quality and cost efficiency with IGZO flat-panel technology

Striking the right balance between cost-effectiveness and image quality is a major challenge in everyday clinical practice. Ziehm Imaging C-arms, equipped with IGZO flat-panel technology, support those demands by delivering a solution with exceptional image quality while maintaining overall performance.

→ IGZO flat-panel technology

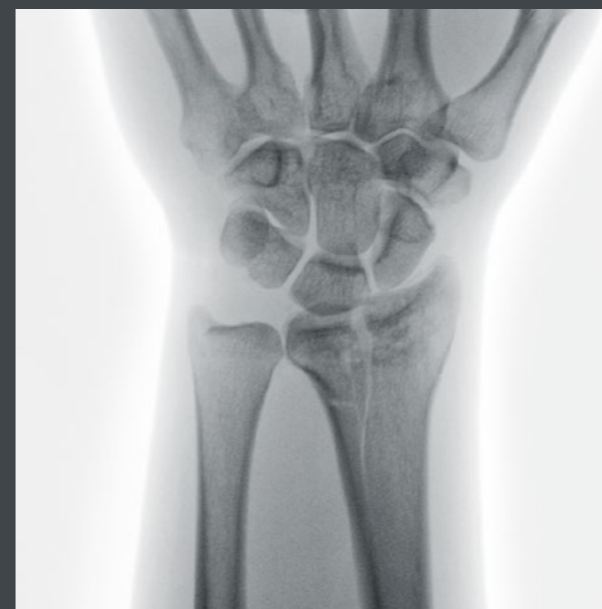
Good soft tissue and bone contrast, as well as high spatial resolution and a wide dynamic range are key to displaying detail-rich images. The IGZO detector technology enables physicians to enhance image quality, delivering high-resolution, low-noise images while minimizing dose levels.

→ High level of performance

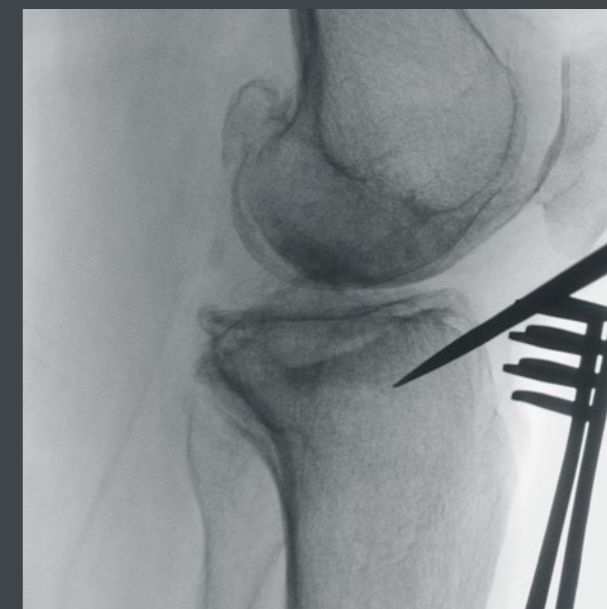
The compact monoblock generator provides short, sharp pulses, delivering crystal-clear images even if the patient is moving. This intelligent pulse technology also improves dose management. The flat-panel technology is unaffected by magnetic fields and enables distortion-free imaging, with no loss in image quality and more than 65,000 shades of gray.

→ Contrast-rich visualization

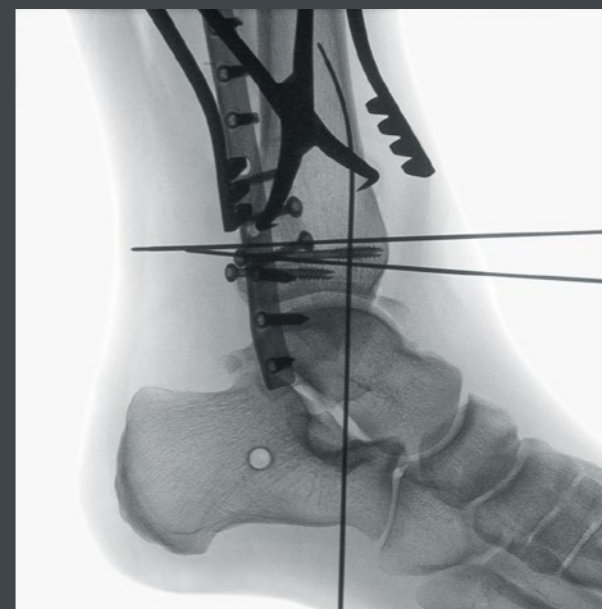
The Ziehm Solo FD offers a standard high-brightness and high-contrast FullHD 27" split monitor or an optional 19" DUO monitor, providing the perfect balance between image quality and affordability. Even from a distance, the high-end monitors provide the physician with optimal insights by visualizing the finest details – from any angle.



Radius fracture



Knee joint



Fibula osteosynthesis (lateral)



Fibula osteosynthesis (a. p.)

02/Ensure maximum flexibility with a versatile design

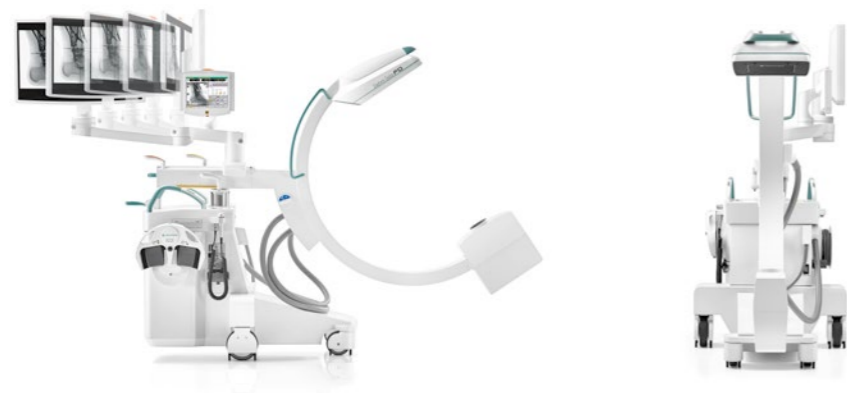
As space in the OR is limited, the demand for imaging systems with smaller footprints is growing. Thanks to the compact design and viewing options, the Ziehm Solo FD enables the hospital to fit every individual need.

→ Compact design

The Ziehm Solo FD is one of the smallest C-arms on the market. It comes with a flatscreen mounted on an articulating monitor arm, eliminating the need for a separate monitor cart. Despite the compact design, 165 degrees of orbital movement enhances easy patient coverage and ensures a maximum of flexibility in the OR – fully counter-balanced in every position.

→ Expanded product line with more options

While the Ziehm Solo FD comes in the standard version with a 21 cm x 21 cm detector, the system is also available with a 31 cm x 31 cm IGZO flat-panel detector. The bigger detector size allows to cover larger anatomical regions in orthopedic and vascular surgery. Additionally with Ziehm Solo FD lite³, there is a configuration with a 21 cm x 21 cm IGZO detector for customers who need a basic configuration.



All-in-one design

All functions required for image capturing, processing and archiving are integrated in the C-arm, without the need for a standalone monitor cart.



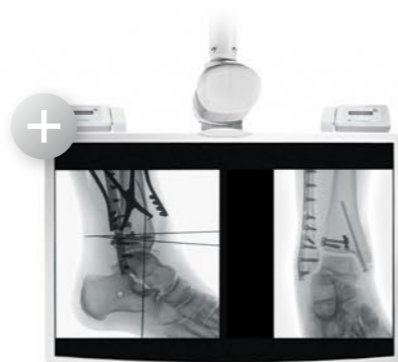
Easy handling

165 degrees of orbital movement and the 87 cm C-arm opening ideally support your workflow.

→ Flexible configurations

In addition to the compact design of the system, three different viewing options enhance flexibility during interventions to allow the product range to suit individual needs.

These options allow you to conveniently operate the system from the Ziehm Viewing Station, the Remote Solo Center and the C-arm.



Option 1: wall- or ceiling-mounted monitors
This space-saving configuration maximizes available space in the OR and can benefit from wireless integration.



Option 2: Remote Solo Center
Create sufficient scope for sterile operation with the Remote Solo Center, flexibly mounted to the sides of the OR table or on a separate stand.



Ziehm Solo FD with integrated monitor
This versatile mobile C-arm comes as standard with an integrated monitor to ensure a compact design for small ORs. Furthermore, it can be extended with three different viewing options.

Option 3: Ziehm Viewing Station
The C-arm can be easily supplemented with an extra Viewing Station featuring a high-brightness FullHD 27" split monitor or a high-brightness and high-contrast 19" DUO monitor.



03/ Optimize process efficiency with advanced clinical workflows

In the face of time and efficiency pressure, compatible clinical workflows help to operate the C-arm in an easy and intuitive way. Unmistakable communication increases safety in the OR and optimizes efficient patient handling.

→ Wireless Freedom

Ziehm Imaging's Wireless Freedom Concept bundles three different opportunities to increase efficiency and safety in the OR. Firstly, WLAN allows operators to transfer images wirelessly to the PACS from any location. Secondly, with the Ziehm Wireless Video option, live images can be transferred to wall- or ceiling-mounted monitors in real time for even greater flexibility. Thirdly, key functions such as X-rays can be actuated with the wireless dual-plus footswitch. The footswitch has the added bonus of increasing safety by reducing cables on the OR floor.

→ Fit for the future

The Solo Center is a touchscreen with a modular software architecture, ensuring maximum flexibility. This interface can be easily upgraded and expanded with additional software modules without the need for hardware changes.

→ Seamless integration

The interface, Ziehm NetPort, enables easy integration into existing IT networks. X-ray images saved in DICOM 3.0 format are transferred to the PACS, and patient data can be exchanged with HIS/RIS. X-ray images can be retrieved at any time. They can also be backed up to DVD or USB stick and printed on transparencies or paper.



Ziehm SmartEye technology mirrors the live image on the touchscreen, enabling the operator to keep track of orientation and object position.

04 / Reduce exposure significantly with the next-generation SmartDose Concept

The Ziehm Solo FD is designed to meet growing demand among surgeons and their staff for minimized dose exposure without compromising on image quality. Optimal filtration and advanced anatomical programs deliver on these demands, making this device perfect for dose-sensitive applications.

→ Best image quality. Minimized dose.

The comprehensive concept consists of a broad, clinically proven application portfolio to address daily challenges of low dose and high image quality. With significant dose savings, Ziehm Imaging sets the benchmark in user-friendly adjustments of dose exposure. SmartDose² helps display even the smallest details of complex anatomical areas and reduce dose with intelligent pulse regulation and optimized anatomical programs. Furthermore, dedicated SmartDose functions significantly reduce exposure in pediatric surgery⁴.



- 

LASER POSITIONING DEVICE
integrated in flat-panel and generator housing for accurate and dose-free positioning of C-arm
- 

REDUCTION OF PULSE FREQUENCY
manually or fully automatically to lower the accumulated dose
- 

OBJECT DETECTED DOSE CONTROL (ODDC)
to automatically analyze the area of interest and minimize dose while optimizing image quality
- 

ANATOMICAL PROGRAMS
with automatic optimization of dose and image quality for best results
- 

HIGH-SPEED ADR
for intelligent, fast regulation of pulse rate to lower the dose level
- 

ZAIP ALGORITHM AND FILTERS
to display fast-moving objects like guide wires and even the smallest vessels in razor-sharp image quality
- 

LOW DOSE MODE
in all anatomical programs for particularly dose-sensitive procedures, e.g. in pediatrics
- 

PREMAG
for exposure-free magnification of X-ray images
- 

AUTOMATIC ADJUSTMENT
for large patients – with no additional increase in dose
- 

REMOVABLE GRID
to reduce dose in pediatric and other dose-sensitive procedures
- 

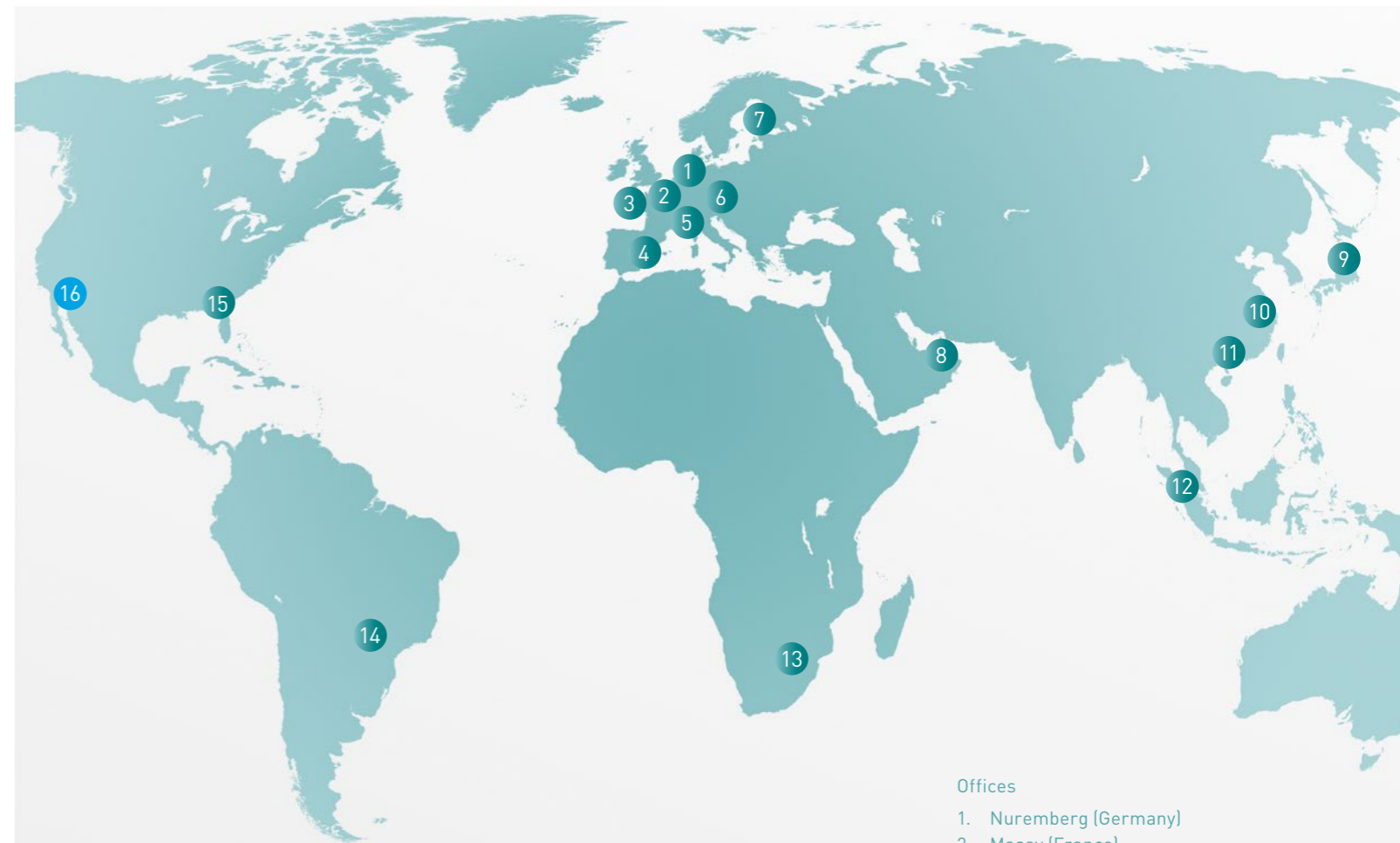
VIRTUAL COLLIMATORS
for exposure-free positioning of collimators
- 

BEAM FILTRATION
for reduced entrance skin dose without compromising on image quality



FEATURES	Ziehm Solo FD lite ³	Ziehm Solo FD	Ziehm Solo FD <small>CMOBLINE</small>
Imaging technology	IGZO, flat-panel, 21 cm x 21 cm	IGZO, flat-panel, 21 cm x 21 cm / 31 cm x 31 cm	CMOS, flat-panel, 21 cm x 21 cm
Detector resolution	1.5k x 1.5k	1.5k x 1.5k / 2k x 2k	2k x 2k
Image Chain	1 k x 1 k	1 k x 1 k	2 k x 2 k (QuantumStream)
Image Insights	-	-	■
Monitor	Standard FullHD 27" split monitor	High-brightness FullHD 27" split monitor	27" UHD high-resolution and high-brightness monitor
Power generator	2.4 kW, pulsed monoblock generator	2.4 kW, pulsed monoblock generator	2.4 kW, pulsed monoblock generator
Ziehm Usability Concept	■	■	■
SmartDose	■	■	■
Remote Solo Center	-	■	■
Ziehm Viewing Station	-	■	■
Advanced Heat Management	■	■	■
Field Transport Solution	-	■ / -	■
Orbital movement	165°	165°	165°

available ■ | not available -



- Offices
1. Nuremberg (Germany)
 2. Massy (France)
 3. Rennes, Therenva SAS (France)
 4. Valencia (Spain)
 5. Reggio Emilia (Italy)
 6. Tulln an der Donau (Austria)
 7. Kerava (Finland)
 8. Dubai (UAE)
 9. Tokyo (Japan)
 10. Shanghai (China)
 11. Guangzhou (China)
 12. Singapore (Singapore)
 13. Sandton (South Africa)
 14. São Paulo (Brazil)
 15. Orlando, FL (USA)
 16. Scottsdale, AZ, Orthoscan (USA)



Color-coded handles



Wireless Footswitch and Remote Solo Center



Field Transport Solution, to meet the needs of disaster medical care

MAXIMIZE YOUR UPTIME



Make sure to get the best service for your daily business.

Rely on Ziehm Imaging for flexible and fast service to stay on the cutting edge of technology. Tailored service packages, remote service and individual upgrade paths keep you competitive in your daily hospital routine.

Images may contain options that are not available for all variants.

¹ The technology Beam Filtration reduces dose exposure for Ziehm Imaging flat-detector systems in comparison with conventional filtration techniques. Data on File. Results may vary.

² The SmartDose Concept includes a variety of hard- and software features. Due to regulatory reasons the availability of each feature may vary. Please contact your local Ziehm Imaging sales representative for detailed information.

³ Ziehm Solo FD lite represents a group of optional hardware and software that creates an option package on the device named Ziehm Solo FD.

⁴ Gosch D. et al. "Influence of grid and ODDC on radiation exposure and image quality using mobile C-arms – First results," RöFo, 09/07

HEADQUARTERS

Germany

Ziehm Imaging GmbH
Lina-Ammon-Strasse 10
90471 Nuremberg, Germany
Phone +49 911 660 67 0
Fax +49 911 660 67 390
info@ziehm.com

USA

Ziehm Imaging
A division of Ziehm-Orthoscan, Inc.
6280 Hazeltine National Dr
Orlando, FL 32822, USA
Toll Free +1 800 503 4952
Phone +1 407 6 15 8560
Fax +1 407 6 15 8561
mail@ziehm.com

Brazil

Ziehm Medical do Brasil
Av. Roque Petroni Jr.,
1089 cj 904
04707-000 São Paulo, Brazil
Phone +55 11 30 33 59 99
Fax +55 11 30 33 59 97
brazil@ziehm.com

Austria

Ziehm Imaging Austria GmbH
Ziegelfeldstrasse 10
3430 Tulln an der Donau
Austria
Phone +43 2272 66441
austria@ziehm.com

Italy

Ziehm Imaging Srl
Via Paolo Borsellino, 22/24
42124 Reggio Emilia, Italy
Phone +39 05 22 61 08 94
Fax +39 05 22 61 24 77
italy@ziehm.com

Spain

Ziehm Imaging Spain SLU
Calle Oller 13, locales 15 y 16
Parque Empresarial Táctica
46980 Paterna (Valencia), Spain
Phone +34 960 911 152
spain@ziehm.com

France

Ziehm Imaging S.A.R.L.
2, rue du chemin des Femmes
91300 Massy, France
Phone +33 1 69 07 16 65
Fax +33 1 69 07 16 96
france@ziehm.com

Finland

Ziehm Imaging Oy
Kumitehtaankatu 5
04260 Kerava, Finland
Phone +358 4 49 75 75 37
finland@ziehm.com

China

Ziehm Medical Shanghai Co., Ltd.
GUBEI SOHO
Rm 3101A, Building 1
188 Hongbaoshi Road
Shanghai, P.R China; 201103
Phone +86 21 62 36 99 03
Fax +86 21 62 36 99 16
china@ziehm.com

Singapore

Ziehm Imaging Singapore Pte. Ltd.
23 Serangoon North Ave 5
#05-04 BTC Center
Singapore 554530, Singapore
Phone +65 65 30 39 40
singapore@ziehm.com

Japan

Ziehm Imaging Japan KK
Room 5, TOC Ariake West Tower 16F
3-5-7 Ariake, Koto-ku
Tokyo 135-0063, Japan
Phone +81 3 5520 5507
Fax +81 3 5531 1011
japan@ziehm.com

Dubai

Ziehm Imaging
Middle East Trading L.L.C
The Regal Tower, Unit 3202
Al Mustaqbal St. Business Bay
P.O. Box 94706
Dubai, United Arab Emirates
Phone +971 55 79 98 370
Phone +971 58 27 55 811
info@ziehm.com