

ROBOTIC-ASSISTED BRONCHOSCOPY

with the mobile C-arm Ziehm Vision RFD 3D



Excellent image quality

- Latest CMOS¹ flat-panel detector technology for CT-like image quality
- Significantly more distinguishable anatomy in 3D reconstruction with ZIR (Ziehm Iterative Reconstruction) to minimize metal artifacts
- Comprehensive SmartDose² concept for best image quality and minimized dose
- Excellent 2D imaging with leading 3D technology providing high-end multidisciplinary interventions in a space-saving design



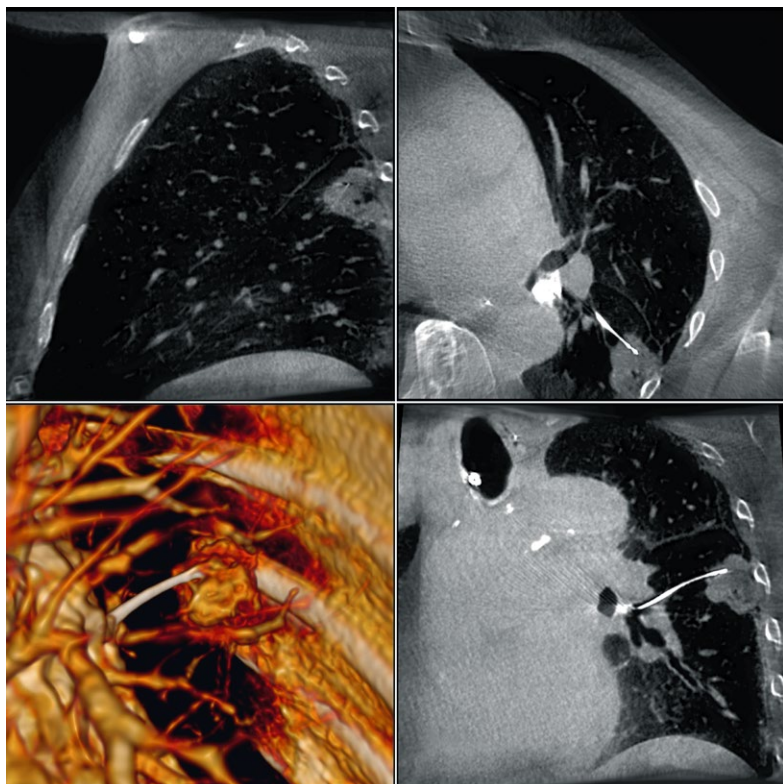
Dedicated anatomical program (APR)

- Specially developed bronchoscopy APR for visualization of the lung – even in the periphery

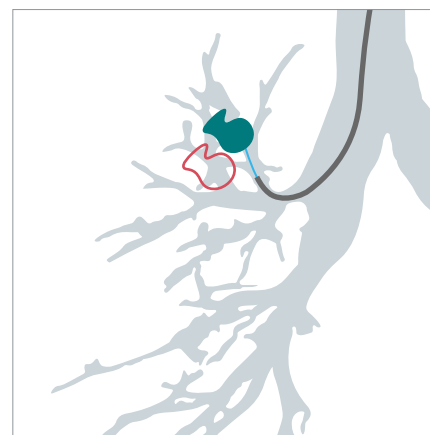


Compatibility with Ziehm NaviPort

- Connection between the Ziehm Vision RFD 3D and the navigation and robotic-guidance systems of leading providers
- Ziehm NaviPort 3D interface for fast and easy connection



Discover how the mobile C-arm Ziehm Vision RFD 3D enables **interventional pulmonologists to effectively bypass CT-to-body divergence** during bronchoscopy to increase diagnostic yield. Thanks to this, complications are reduced and treatment results are optimized. In addition, this can be achieved at the lowest possible dose and without compromising image quality – due to the SmartDose concept.



- Lesion position according to preoperative CT data
- Lesion position according to intraoperative C-arm data

Overcome CT-to-body divergence with real-time tool-in-lesion confirmation thanks to intraoperative CBCT (cone-beam CT) 3D scan with the Ziehm Vision RFD 3D.



Learn more:
www.ziehm.com/en/RFD3D/btp

¹CMOSline represents a system configuration that is based on a Ziehm Imaging CMOS flat-panel detector. ²The SmartDose concept includes a variety of hard- and software features. Due to regulatory reasons the availability of each feature may vary. Please contact your local Ziehm Imaging sales representative for detailed information.

Print product with financial climate contribution.

ClimatePartner.com/53093-2506-1002 | 282270 Rev 00 06/2025.

Non-contractual document – Ziehm Imaging GmbH. All rights reserved.

Imaging technology	CMOS, flat-panel, 31 cm x 31 cm
3D volume size / voxel	16 cm x 16 cm x 16 cm; 320 ³ /512 ³ voxel Further options: 10 cm x 10 cm x 10 cm; 320 ³ /512 ³ voxel 19.8 cm x 19.6 cm x 18.0 cm; 320 ³ /512 ³ voxel
Power generator	30kW, pulsed monoblock generator
Motorization	Full control of the 4 motorized axes
3D scanned information	180° (SmartScan)