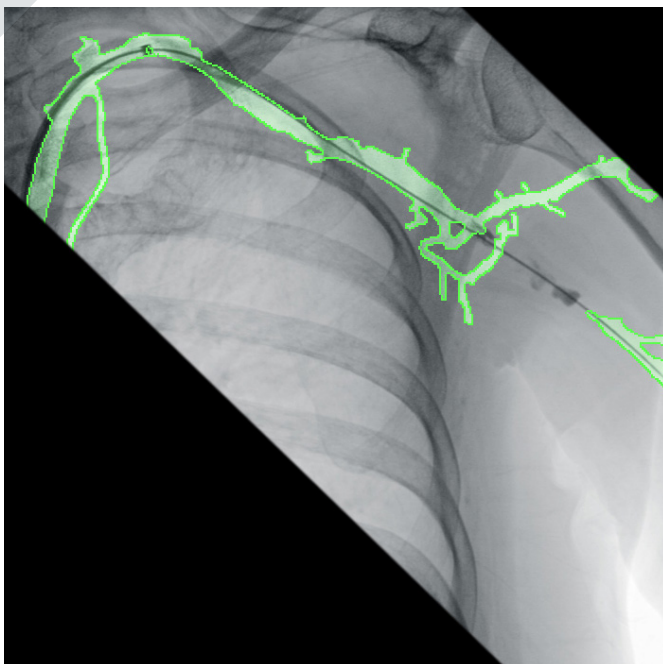


ziehm imaging

ZIEHM VISION RFD HYBRID EDITION

Enhanced Vessel Visualization



GAIN NEW CLARITY IN VASCULAR PROCEDURES.

Our clinical images are based on 65,536 shades of gray. Adding color allows details to be seen that were not previously recognizable. Structures can be differentiated more easily, which could help in future diagnostics.

With the introduction of color to our comprehensive set of software functionalities, colored markings of vessels and side branches for improved detection and differentiation during complex vascular procedures brings new clarity in vascular procedures.

It boosts fast, efficient and secure decision-making and helps to ease daily workflows.

Upgrade your workflow with **COLOR** and gain clarity!

Ziehm Imaging
6280 Hazeltine National Dr | Orlando, FL 32822 | USA
Phone 800 503 4952 | Fax 321 445 5514
mail@ziehm.com | www.ziehm.com     

© 2023 Ziehm Imaging, a division of Ziehm-Orthoscan, Inc. All Rights Reserved. Ziehm Imaging is constantly improving its products and reserves the right to change these specifications without notice. 113-0251 Rev. A 07/2023

Nationwide toll-free
**SERVICE & TECHNICAL
PHONE SUPPORT**
866.949.4346



ENHANCED VESSEL VISUALIZATION

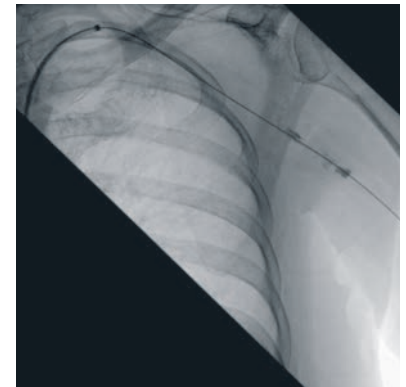


Comprehensive tools to support optimal image quality

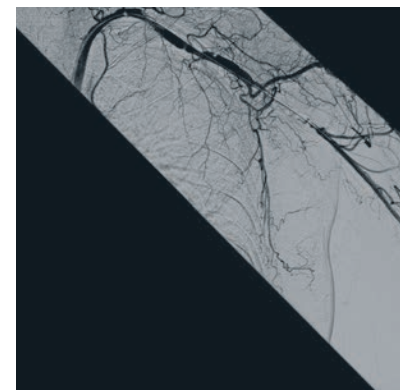
SmartVascular offers a specialized workflow to meet the needs of complex vascular procedures. It allows users to easily switch between Fluoro, DSA, MSA and RSA with just one click. This enables the surgeon to perform an RSA from a single DSA image, which saves precious time in the OR as well as reduces the dose applied to the patient. In addition, SmartVascular features a dedicated foot-switch configuration, that supports an easy and intuitive vascular workflow.

With the introduction of color to our comprehensive set of software functions, Enhanced Vessel Visualization and the improved measurement functions enhance daily communication in the OR and boost fast, efficient and secure decision-making and help to ease daily workflows.

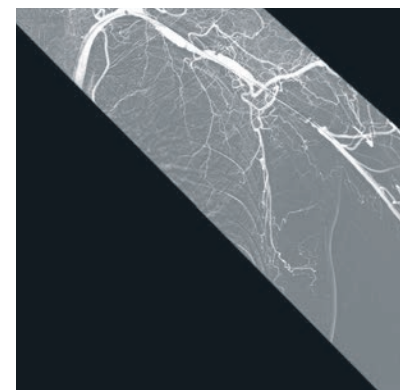
* Enhanced Vessel Visualization is offered on the Ziehm Vision RFD, Ziehm Vision RFD Hybrid Edition² and Ziehm Vision RFD 3D



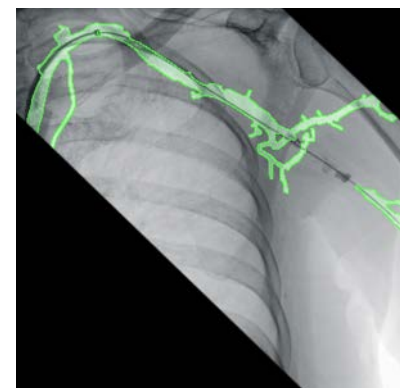
Native image



Digital-Subtraction-Angiography (DSA)



Roadmapping (RSA)



Enhanced Vessel Visualization

At a glance

| | |
|--------------------------------------|---|
| Imaging technology | 20.5 cm x 20.5 cm flat panel with 100 µm pixel size / 31 cm x 31 cm flat panel with 100 µm pixel size |
| Detector resolution (FD) | 2 k x 2 k / 3 k x 3 k |
| Power generator | 25kW, pulsed monoblock generator |
| Ziehm Usability Concept ³ | ✓ |
| SmartDose Concept ⁴ | ✓ |
| Advanced Active Cooling (AAC) | ✓ |
| Orbital movement | 165 degrees |
| Motorization | Full control of the 4 motorized axes |

¹ CMOSline represents a system configuration that is based on a Ziehm Imaging CMOS flat-panel detector. ² Ziehm Vision RFD Hybrid Edition represents a group of optional hardware and software that creates an option package on the device named Ziehm Vision RFD. ³ The Usability Concept includes a variety of hard- and software features. Due to regulatory reasons the availability of each feature may vary. Please contact your local Ziehm Imaging sales representative for detailed information.

⁴ In clinical practice, the use of SmartDose may reduce patient dose depending on the clinical task, patient size, anatomical location, and clinical practice. A consultation with a radiologist and a physicist should be made to determine the appropriate dose to obtain diagnostic image quality for the particular clinical task.