



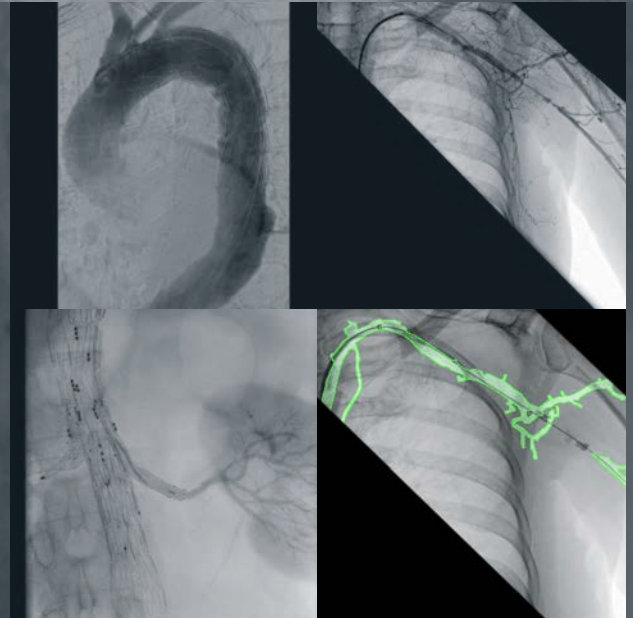
Ziehm Vision RFD Hybrid Edition

The Comprehensive Mobile Hybrid Solution

Image Quality: Changing the Game

The core of Medical Imaging: Image Quality

In medical imaging, the most important goal is obtaining the best clinical image quality. As the market leader in innovation, Ziehm Imaging provides a range of hardware and software features in our mobile C-arms, that helps to offer superior image quality. This changes the game for our clinicians and lets them discover new areas of clinical applications.



Best image quality. Minimized dose.

Comprehensive concept for dose reduction

Our latest improvements in SmartDose³ help to display even the smallest details of complex anatomical areas and reduce dose with intelligent pulse regulation and optimized anatomical programs.

With significant dose savings, Ziehm Imaging sets the benchmark in user-friendly adjustment of dose exposure, and the SmartDose concept has been incorporated in the current generation of mobile C-arms.



Laser Positioning Device



Anatomical Programs



Low Dose Mode



Reduction of Pulse Frequency



High-Speed ADR



Removable Grid



Virtual Collimators



Automatic motion & position detection



Automatic adjustment for large patients



Exposure-free magnification



Beam Filtration⁴



ZAIP Algorithm & Filters

Ziehm Vision RFD Hybrid Edition

Challenging procedures, such as highly demanding interventional cardiovascular cases as well as orthopedic, trauma, and spine surgeries are increasing due to an aging population. With its powerful 25 kW generator, the Ziehm Vision RFD Hybrid Edition features CMOS technology and a comprehensive dose concept for high image quality and minimized dose, taking any OBL or OR to the next level. Requiring zero modifications to existing ORs, this mobile, feature-rich motorized solution is a valuable contribution to any clinic's competitiveness and financial performance; one that is ready to go - anytime, anywhere.



Unique Selling Points

- Automatic optimization of dose and image quality with advanced anatomical programs
- Reduced operating costs in comparison to conventional Hybrid ORs
- 32" color monitor featuring exceptional brightness and contrast on optional Articulating Monitor Arm
- Anatomical Marking Tool (AMT) to easily apply markings and labels to fluoroscopic images – now enhanced with color
- Advanced Active Cooling for optimal generator temperature
- Full control of the 4 motorized axes with variable isocenter
- Dedicated SmartVascular workflow for advanced vascular procedures

Imaging for a wide range of clinical applications

- Vascular / Endovascular Surgery
- Interventional Radiology
- Interventional Cardiology
- EP / Structural Heart



Articulating Monitor Arm
offers versatile viewing options

CMOSLINE

IMAGING SOLUTIONS



Since 1972, Ziehm Imaging has been a company of firsts. Our visionary thinking has made us the mobile C-arm expert worldwide. We are committed to our mission of setting new technology standards. As an innovation leader, we were the first company to:

- Show Digital Subtraction Angiography (DSA) on a mobile C-arm
- Introduce a touchscreen user interface
- Incorporate a flat-panel detector on a mobile C-arm worldwide
- Launch a 3D C-arm with flat-panel detector on the market
- Introduce a mobile full-size C-arm with a CMOS detector

PROFESSIONAL TRAINING



Through our training programs, we empower our partners with the knowledge, skills, and insight they need to get the most out of our mobile C-arms. Our courses balance a classroom setting with hands-on experience to reveal the full benefits of our exceptional products.

Training is available at our Americas Academy Training facilities or customer's location (case-by-case basis).

NATIONWIDE SERVICE



The Customer Advantage:

- Nationwide coverage
- Fast, flexible & reliable service
- 24 hour delivery for parts inventoried in the US
- Comprehensive service covers the lifespan of your product

¹ Ziehm Vision RFD Hybrid Edition represents a group of optional hardware and software that creates an option package on the device named Ziehm Vision RFD. The X-ray images highlighted were obtained with the Ziehm Vision RFD Hybrid Edition CMOS C-arm.

² CMOSline represents a system configuration that is based on a Ziehm Imaging CMOS flat-panel detector.

³ In clinical practice, the use of SmartDose may reduce patient dose depending on the clinical task, patient size, anatomical location, and clinical practice. A consultation with a radiologist and a physicist should be made to determine the appropriate dose to obtain diagnostic image quality for the particular clinical task.

⁴ The technology Beam Filtration reduces dose exposure for Ziehm Imaging flat-detector systems in comparison with conventional filtration techniques. Data on File. Results may vary.

Ziehm Imaging
6280 Hazeltine National Dr | Orlando, FL 32822 | USA
Phone 800 503 4952 | Fax 321 445 5514
mail@ziehm.com | www.ziehm.com



Nationwide toll-free
**SERVICE & TECHNICAL
PHONE SUPPORT**
866.949.4346

